



Forest Products and Wooden Pallet Industry

Digital Catalog



Innovative
Design Team



Expert
Production Crew



Dynamic
Marketing Department



Unconditional
Customer Satisfaction



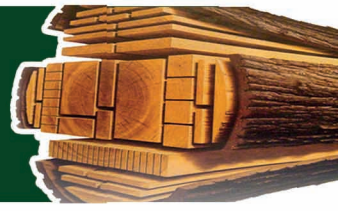
FACTORY : Şinik Organize Sanayi Sitesi 1 Nolu Cadde No:23 - Akçabaat - Trabzon / TÜRKİYE
SALES OFFICE : Sanayi Mahallesi Devlet Karayolu Caddesi No:84 - Ortahisar - Trabzon / TÜRKİYE
info@megaexportglobal.com- info@megawoodenpallet.com

+90 542 359 67 37

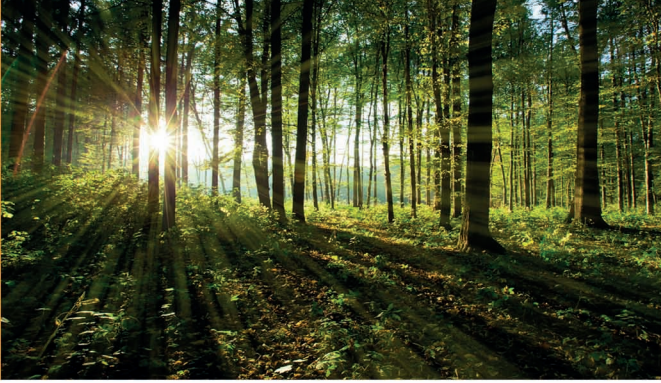
www.megawoodenpallet.com



Lütfen Bu Belgeyi Yazdırmadan Önce Çevreyi Düşünün./Please consider the environment before printing this document



The Transformation of Trees into Pallets



1. Phase

Trees suitable for pallet manufacturing are carefully selected from forests in the Mediterranean region, and the cutting process is performed with great care. The thin branches on the cut trees are removed from their main trunk, completing the first stage. The resulting product at this stage is called "**timber**".

2. Phase

The timbers that are suitable for pallet production are selected and transported to our manufacturing site with special vehicles. The most important criteria to be considered while scaling the timbers in this stage are the thickness of "**girth**" and the quantity of the removed branches from the timber. It is also crucial to ensure that the timbers do not have too many branches removed.



3. Phase

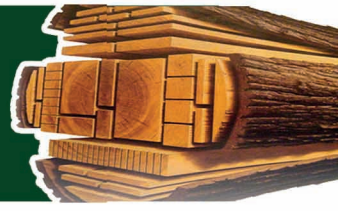
The first step in the process of turning the timbers brought to our manufacturing facility into pallets begins with the cutting process. The product that comes out of this stage is referred to as '**lumber**'. At this stage, the obtained lumber is sorted according to the industries in which they will be utilized (such as construction, furniture, and industry). The lumber that is allocated for pallet production is carefully selected to ensure that there are no knots on its surface.



4. Phase

The lumber specially designated for pallet manufacturing is stacked on top of each other with gaps in between and prepared for the drying process. The lumber placed in the kiln is monitored until it reaches a moisture level of 20%, which is suitable for pallet manufacturing. The dried lumber is brought into the workshop to be cut to size and turned into finished products.





The Transformation of Trees into Pallets



5. Phase

After it is brought into the workshop, the kiln-dried lumber is cut to the appropriate length and dimensions for the production of pallets. The lumber produced at this stage is known as **"dimensional lumber"**. Once the lumber has been cut to size, it is sent to an area with a "Weining machine" to have the top and bottom surfaces cleaned.

The weining machine, with its special blades, not only **cleans the top and bottom surfaces** of the lumber but also performs the necessary male-female channel-cutting process simultaneously to allow them to be joined together. As a result, when the planks that are progressing toward becoming pallets are arranged side by side, their thickness settings are also equalized.

6. Phase



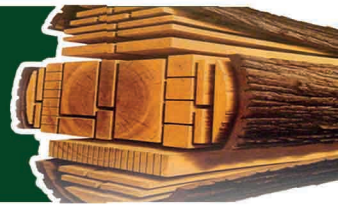
7. Phase

After the completion of surface cleaning, thickness adjustment, and the side-by-side cutting channel opening processes, the planks are transported to the B.E.M 7 machine. At this stage, the machine blades' specific feature enables planks to be cut with precise measurements of their head lengths, while simultaneously opening the tips that will pass through the metal frame.

8. Phase

The final step in the wood processing of the timber that is being prepared for pallet production is the opening of channels to place inner support bars, which are mandatory for some pallet sizes. During the creation of pallets by combining the planks, the channels that have been opened with the same measurement and precision allow metal bars to be inserted inside them. It has been observed that pallets produced using this method are much more resistant to the flexures caused by the weight of the load carried on them.





Here Are Some Of The Pallets That We Produce

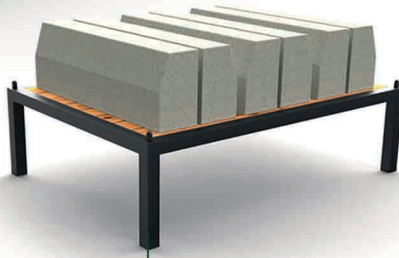
01-WOODEN PALLET WITH PROFILE LEGS



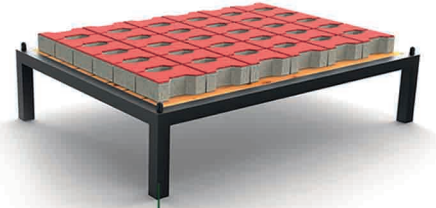
Pallet Rack View



Concrete Block View



Curbstone View

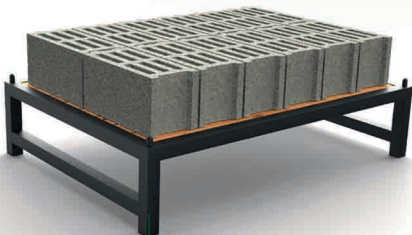


Paver Block View

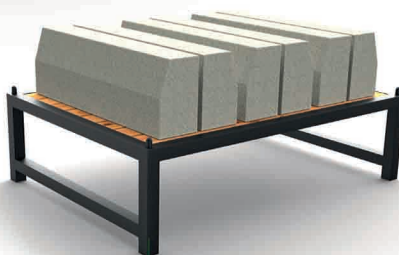
02-WOODEN PALLET WITH CROSSBAR PROFILE LEGS



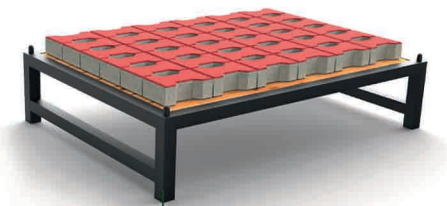
Pallet Rack View



Concrete Block View

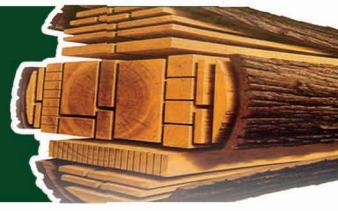


Curbstone View



Paver Block View





Here Are Some Of The Pallets That We Produce

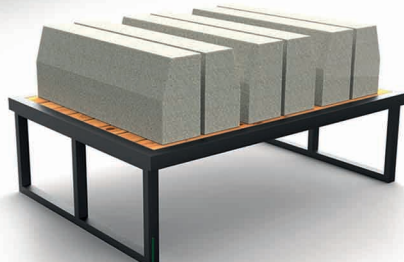
03- WOODEN PALLET WITH BRACED PROFILE LEGS



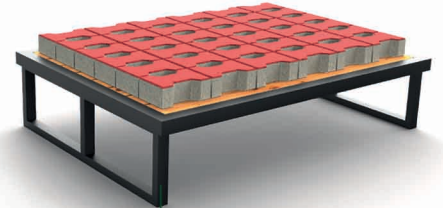
• Pallet Rack View



• Concrete Block View



• Curbstone View

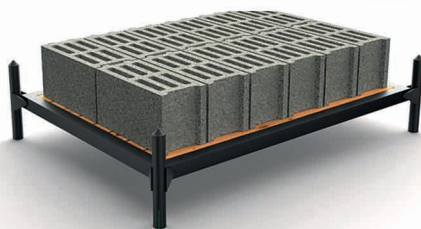


• Paver Block View

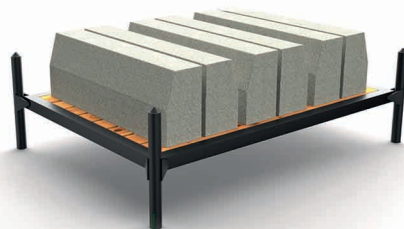
04- WOODEN PALLET WITH PIPE LEGS



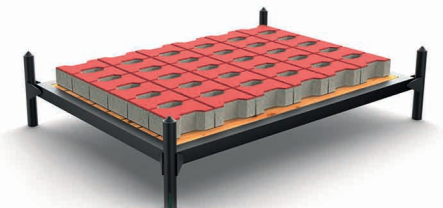
• Pallet Rack View



• Concrete Block View

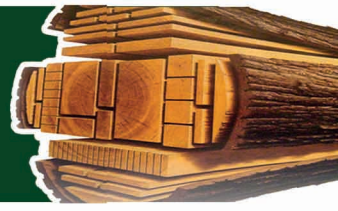


• Curbstone View



• Paver Block View



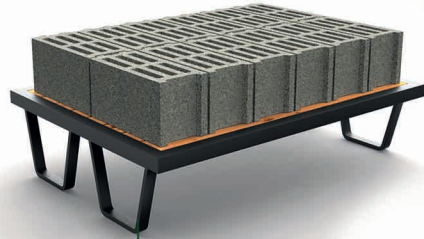


Here Are Some Of The Pallets That We Produce

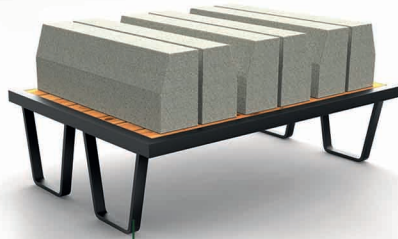
05-WOODEN PALLET WITH FLAT BAR LEGS



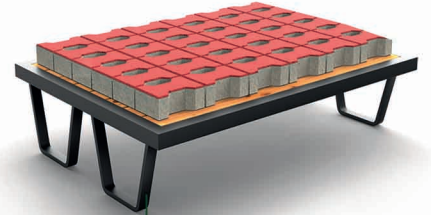
Pallet Rack View



Concrete Block View

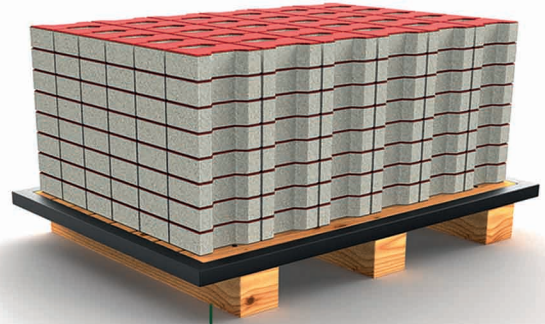


Curbstone View

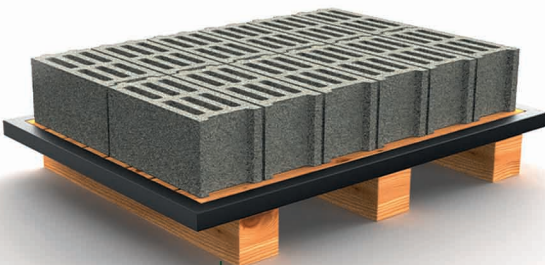


Paver Block View

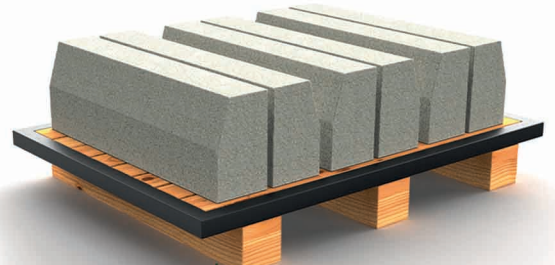
06-3 RUNNERS WOODEN LEGS PALLET WITH FRAME



Paver Block View

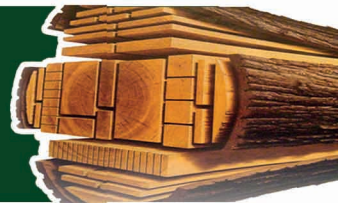


Concrete Block View



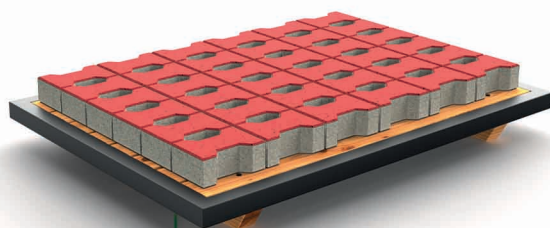
Curbstone View



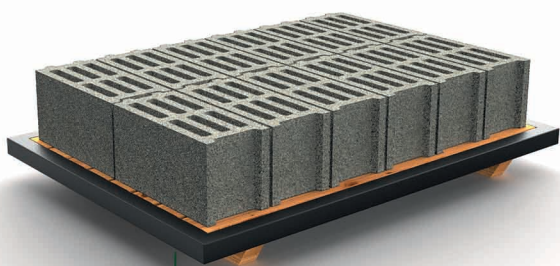


Here Are Some Of The Pallets That We Produce

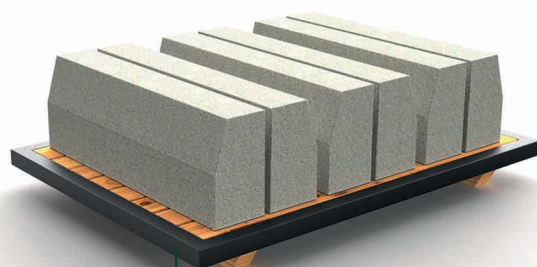
07-WOODEN PALLET WITH 2 RUNNERS AND FRAME



• Paver Block View

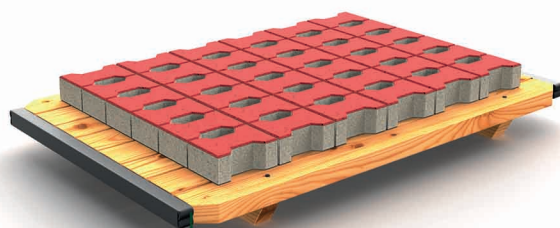


• Concrete Block View

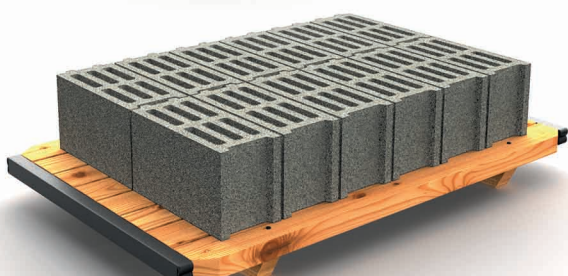


• Curbstone View

08-WOODEN PALLET WITH 2 RUNNERS AND METAL EDGE



• Paver Block View

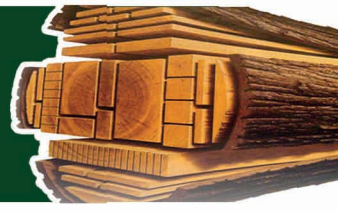


• Concrete Block View



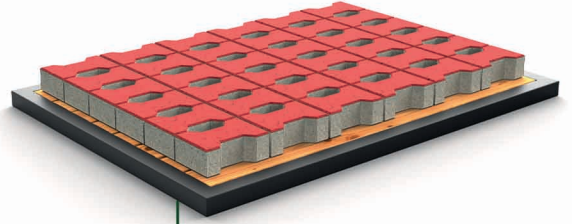
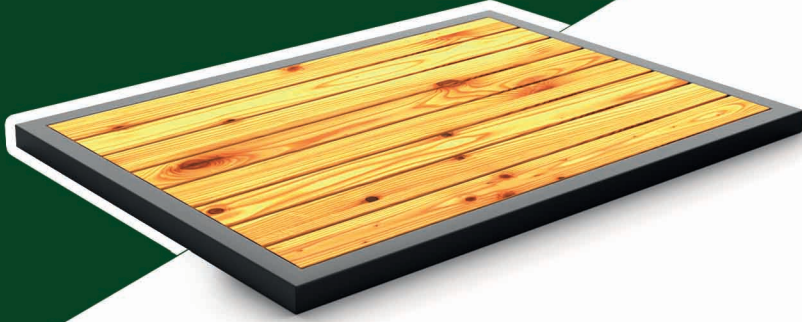
• Curbstone View



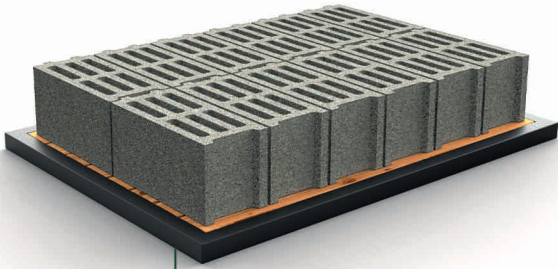


Here Are Some Of The Pallets That We Produce

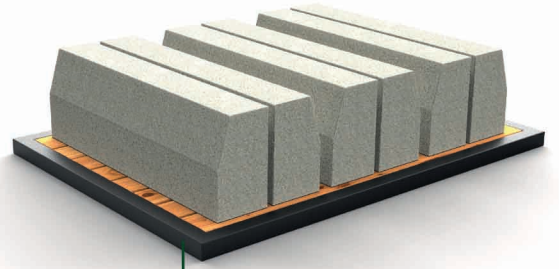
10- WOODEN PALLET WITH FRAME



• Paver Block View

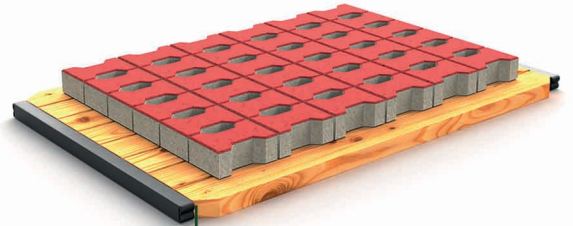


• Concrete Block View

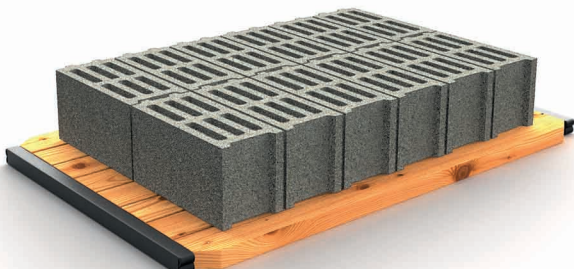


• Curbstone View

11- WOODEN PALLET WITH METAL EDGE



• Paver Block View

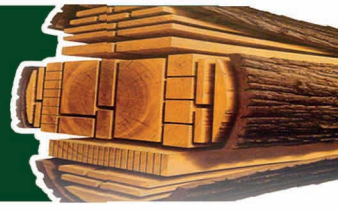


• Concrete Block View



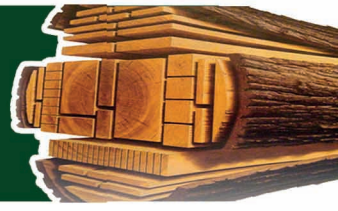
• Curbstone View





Production View





Company Introduction



We take pride in being a leading organization in the industry, preferred in 52 countries worldwide, thanks to the contributions of our experienced team on this journey, which we embarked on with the principle of unconditional customer satisfaction. The main features that set us apart from other companies are:

👉 Our company has established our production planning and sales infrastructure according to exports, thanks to our experienced team that we employ in this regard. With our company, you can receive your products at your door without any hassle, only by paying your country's tax. We provide this opportunity to you by employing an experienced team that allows us to serve you without any need for you to deal with any issues.

👉 We aim to establish stronger bonds with our customers through our on-time production and delivery principle. We offer our customers a safe trading opportunity with a fixed price guarantee by minimizing our profitability. With our special banking agreements, we provide you with the opportunity to trade with leasing or letters of credit.

👉 With the activation center we have developed, we provide you with the opportunity to receive 24 hours of uninterrupted service from a representative in your language and to trade comfortably as if you were buying goods from any city in your own country.

👉 We eliminate your obligation to sign a contract in an unfamiliar language by preparing the contracts related to the products we have agreed on in the language preferred by our customers. Moreover, by writing them in the contract, we provide the dimensions to be used in the manufacturing process and standardize them in a way that does not allow unpleasant surprises afterward.

👉 By providing an ip number to the customers who have signed the contract with us, we offer them the opportunity to track the manufacturing and shipment of the product using the container number. We provide the possibility of easy access to us in any language through our 24-hour online technical support line.

👉 We ensure that all the products we manufacture are certified with quality certificates that hold international validity. Our compliance with customs regulations allows the products you purchase to enter the country you are in easily, without any compatibility-related customs regulation issues.

